

## CellTracks Analyzer II®

### LINUX UPGRADE Version 2.3

The CellTracks Analyzer II® Linux (Version 2.3) upgrade provides significant improvements designed to enhance both performance and the user experience. The upgrade provides simplified operation, improved data storage & handing, and traceability of sample and QC data to meet CLIA requirements.

**NOTE: The Linux (Version 2.3) upgrade is for customers who currently have a CellTracks Analyzer II® running under the XP operating system.**

#### Features

- **Automated scanning procedure**  
Edge detection and focusing are automated and robust.
- **Intuitive Folders**  
Functions are arranged in folders (Patient Test, Patient Data, QC Test, QC Data, Setup and Archive).
- **Automated Data Field Population**  
The MagNest® data button carries information about the sample, the CellTracks® AutoPrep® System, operator, reagent lot and expiration data, processing time, etc.
- **Intelligent Test Recognition**  
The MagNest® device also carries the sample information from the sample bar code, the test name, which triggers the right scan (control vs. patient) and the right reporting (Patient vs. Research).
- **Uniform Tables with Sorting and Exporting Functions**  
Uniform formatting for tables in Patient Data, QC Data and Archive functions. Data may be sorted for easy access to a specific sample.
- **Background Auto Analyze Function**  
The Auto Analyze function is performed in the background, which removes a user operation and streamlines workflow.
- **QC Data Sorting**  
Can be sorted by lot, date, test type, etc. The QC data can also be viewed by lot in a chart format.
- **Improved Sample Image Archiving**  
Archiving allows multiple samples (typically 9-12) per DVD.

## CellTracks® Analyzer II

### LINUX UPGRADE Version 2.3

#### Features (cont.)

- **Allows User Defined Test Definitions**

- **Streamlined Image Review**

Easily Highlight Positive Images - Simply click an image to select

Easy Table-Based Image Navigation – Allows the user to scroll to any part of the table without loading new pages.

Image Sorting – Positive images may be sorted to the top of the gallery, making it easy for a second reviewer to analyze the data.

Sort Image by Characteristic - Images also may be sorted by size, frame or event number.

Running Total of Positives - Displayed along with the number of events in the gallery.

Tag Individual Images - Images may be added to the report.

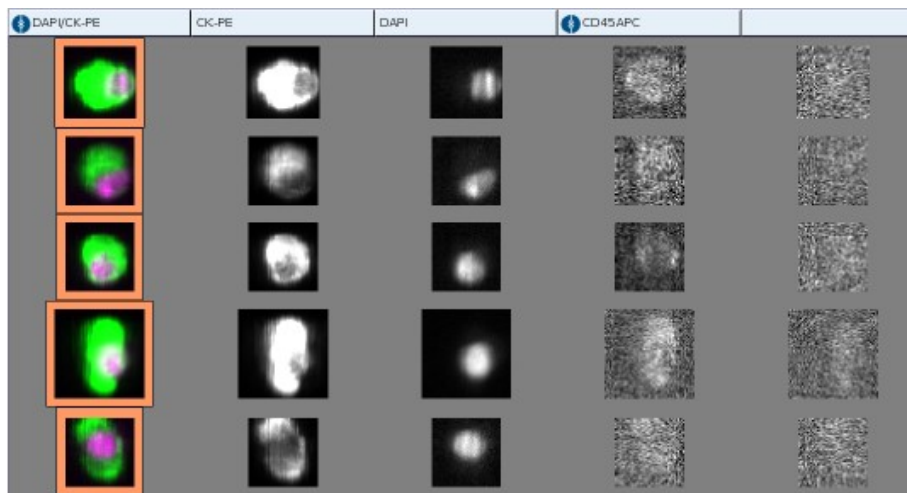
Easy Operator Tracking - Multiple reviewers are tracked.

Intelligent Large Image Management - Large images are presented in the gallery scaled down to fit, but may be viewed actual size.

Magnify Any Image - Any image can be magnified.

Images are directly linked to frame in cell select

#### Sample Linux Image Gallery



Orange boxes denote CTC's selected by the user

For more information please contact your Veridex Territory Manager at 1-877 VERIDEX, prompt 6.